

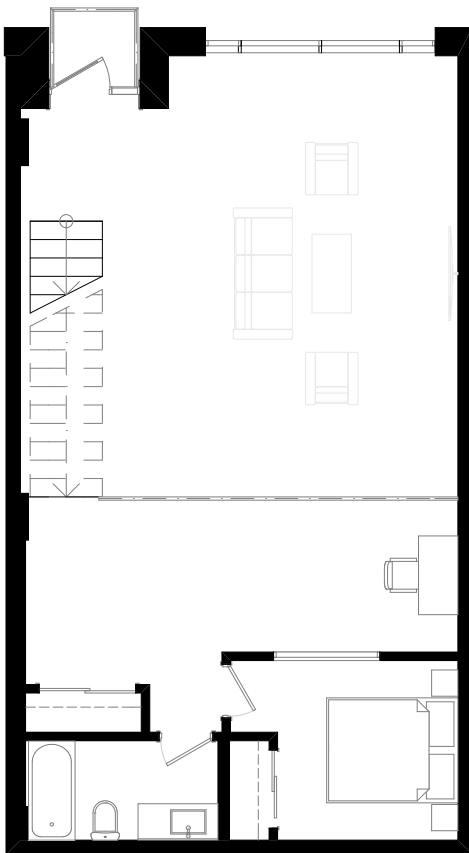
# LOUVRE

AT CENTURY PARK

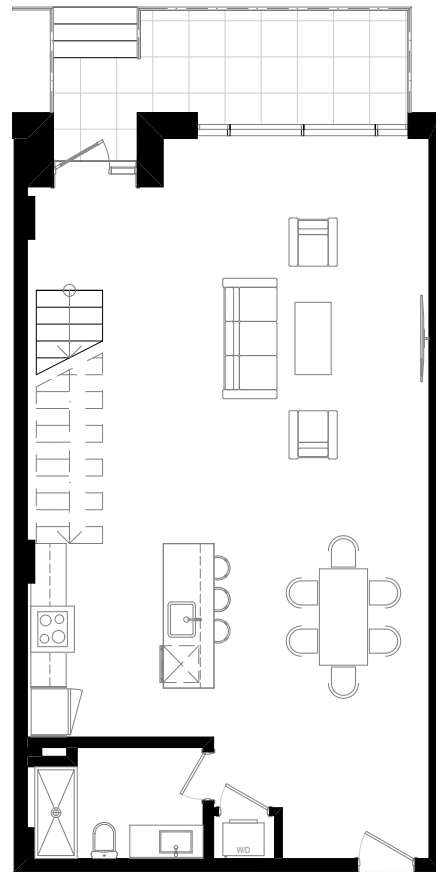
## DAVINCI

FLOOR PLAN

UPPER LEVEL



LOWER LEVEL



Phase 2

**1 BED • 2 BATHS**  
**1156 - 1231 SQFT**

[livelouvre.ca](http://livelouvre.ca) | 587-405-1823

In the interest of product improvement and maintaining the high standard of these homes, the developer reserves the right to make modifications and changes to plans, specifications, and features. Sizes and dimensions are approximate and may vary with actual survey. E&OE.

Signs of Change  
INITIATIVE

DEVELOPED BY  
PROCURA