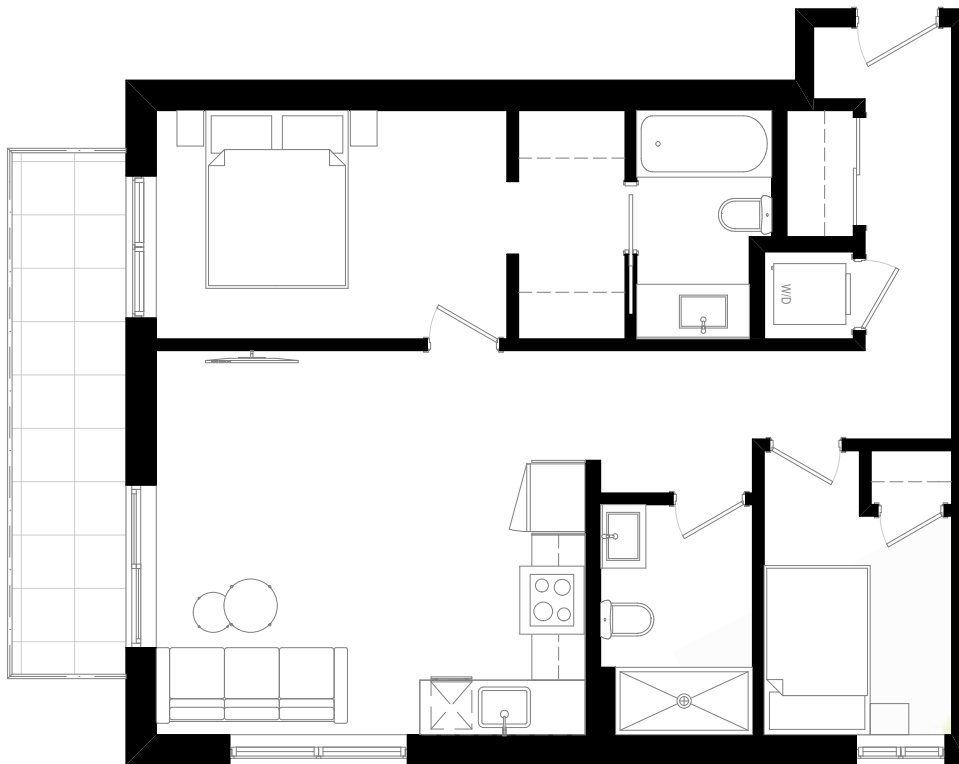




LOUVRE
AT CENTURY PARK

RENOIR

FLOOR PLAN



Phase 1 & 2

2 BEDS • 2 BATHS
690 - 746 SQFT

livelouvre.ca | 587-405-1823

In the interest of product improvement and maintaining the high standard of these homes, the developer reserves the right to make modifications and changes to plans, specifications, and features. Sizes and dimensions are approximate and may vary with actual survey. E&OE.


Signs of Change
INITIATIVE

DEVELOPED BY
PROCURA