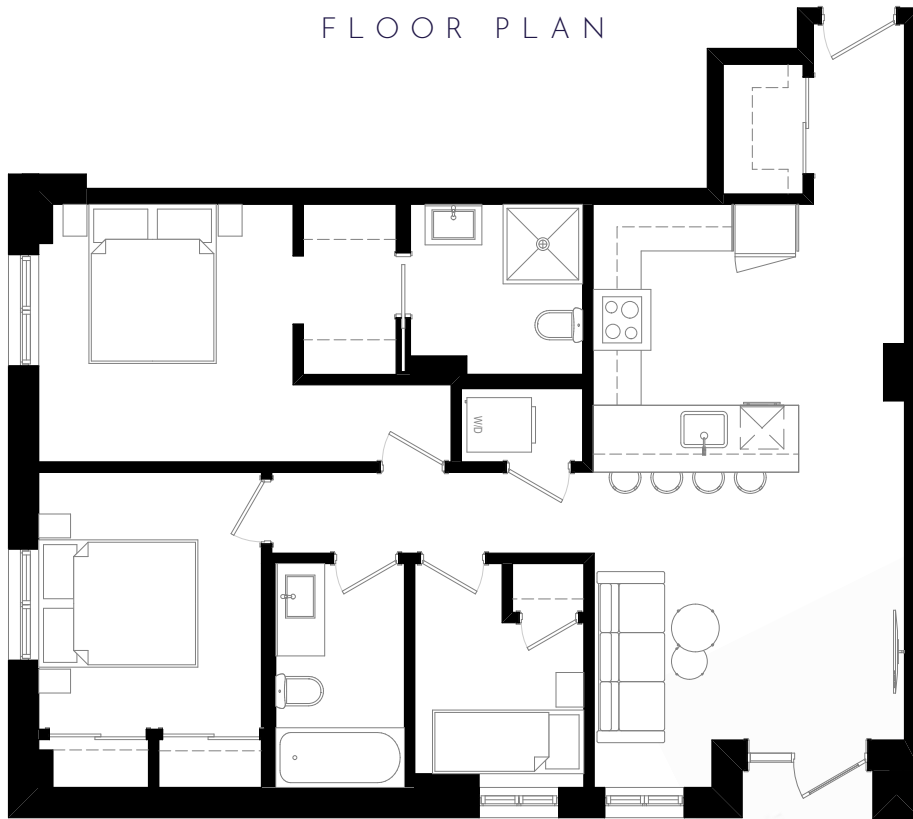




**LOUVRE**  
AT CENTURY PARK

# VENUS

FLOOR PLAN



Phase 3

**2.5 BEDS • 2 BATHS**

**884 SQFT**

**WALKOUT**

[livelouvre.ca](http://livelouvre.ca) | 587-405-1823

In the interest of product improvement and maintaining the high standard of these homes, the developer reserves the right to make modifications and changes to plans, specifications, and features. Sizes and dimensions are approximate and may vary with actual survey. E&OE.



DEVELOPED BY  
**PROCURA**